

## 824 Squadron Photos



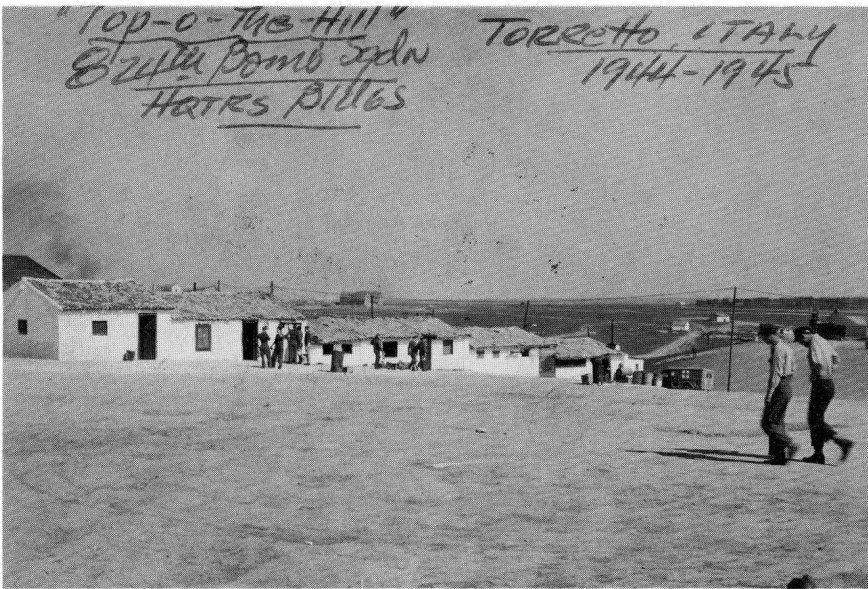
Al Pietka on the left, man on the right unidentified. Charles McKew Photo 824 Sq



Leo Prone, 824 Sq Lead Bombardier. Charles McKew Photo, 824 Sq.



Line chief M/Sgt Edwin M Turner in front of Col Keese's P-40 Grant Hansen photo.



"Top of the hill," 824 Squadron Headquarters buildings. Fang Hansen photo 824



Flight line shuttle bus returns to the flight line to sweat out the return of a Ploesti mission.



Bottom right: Instrument specialist Sgt Charles Mckew completes the replacement of an instrument transmitter. Peter Drill photo 484 BG

824

Sq

Bottom left: Line Chief M/Sgt Edwin M Turner removing 3 engine cowling after a mission to Yugoslavia Septem-ber 2, 1944. 15th AF photo.

